

Royal Aircraft Factory BE2c

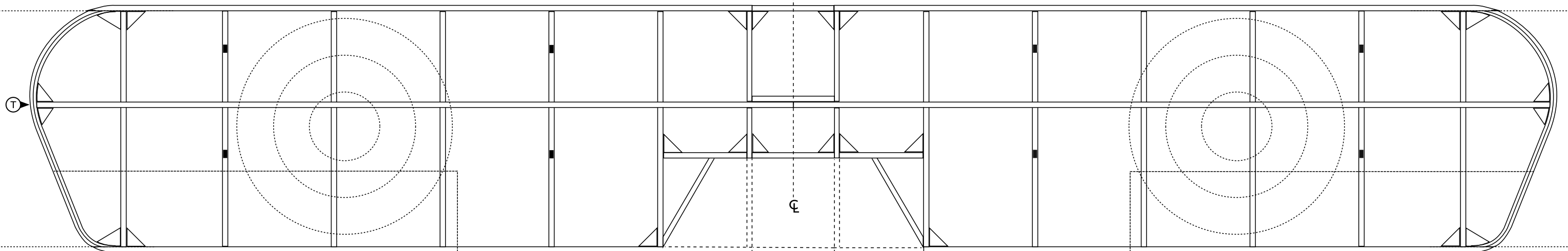
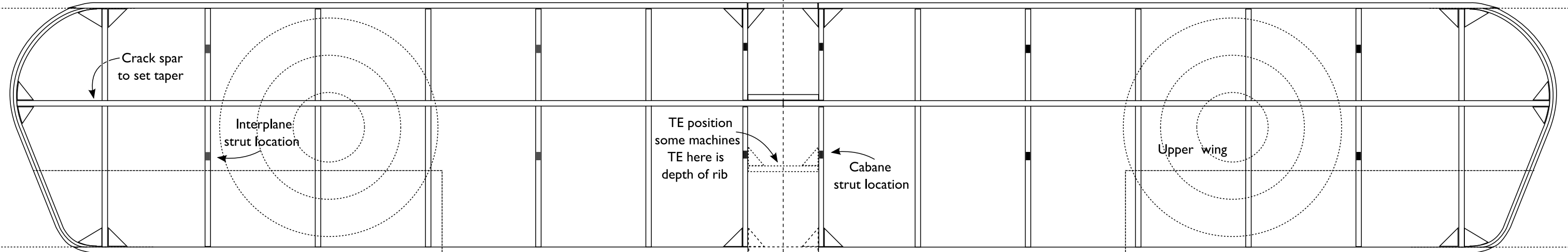
A 16" Span Indoor Model

By Peter Smart

MELROSE
Aeronautical Engineers
GRAMS : AEROMEL

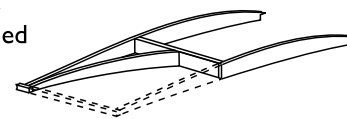
LEs, Spars & TEs hard 1/16"□
Ribs med. 1/16" sheet.
Wing tips 1/16" x 1/32" x 5" x 2 lamina

For wings (upper & lower) with TE at less than full chord, join the halves using a temporary TE at full chord and when all is stable fit the correct TE and remove the temporary one.



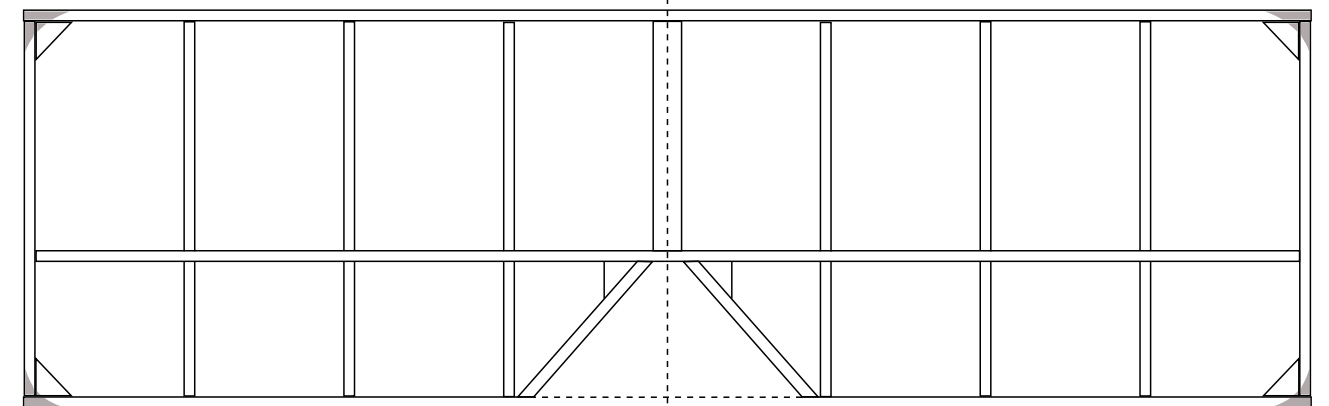
Dihedral, both wings, 15mm to underside of wing tip at (T)

Lower wing root . General arrangement.
Remove dashed section after halves are joined



Sand off shaded sections to give rounded corners.

LE, spar & TE med. 1/16"□
Ribs. light 1/16"□



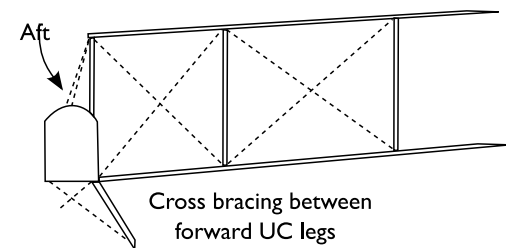
Remove dashed section of TE after part is complete.

Ribs x 18 + 2 rear halves for lower wing root
Cabane strut bearing ribs x 2

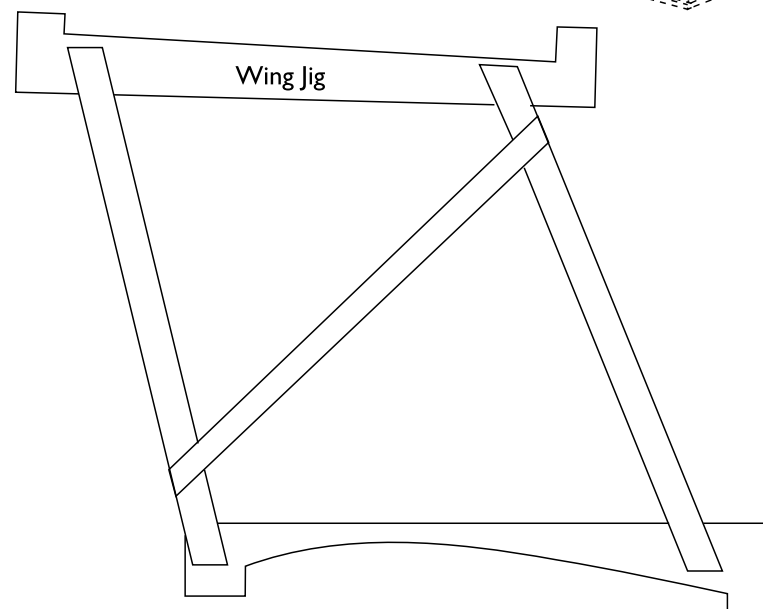
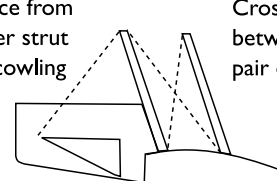
Upper interplane strut bearing ribs x 4
Lower interplane strut bearing ribs x 4

Dihedral Guide
4.5 degrees

Cross bracing between interplane struts, fore and aft .
Bracing from fore & aft cabane struts to top of fuselage.



Brace from inner strut to cowlings
Cross bracing between each pair of struts.



All wood balsa unless otherwise noted.